



1ST EDITION

2017

PRODUCT
PERFORMANCE
PASSION





RAHMAN GROUP

Only few companies in the World, working in the PPE sector, can be proud of such a high level of know-how as the Rahman Group. A global expertise built up step by step, from a perfect domain of the raw materials (Rahman Group is also a leather manufacturer), to the ability of shaping products on the specific customer needs. A Company history marked by new goals each year, always looking into the future, merging in its products different visions, experiences and cultures. Such concepts as internationalization, differentiation and distinctiveness are not just features, but also a mission for the entire Group that is present in all main markets with various production sites and labels.

Perf comes from this universe. It is a combination of Italian design and cutting-edge technologies, that create performances in each Country of the World. This is the essence of the Rahman Group, a wide and strong team of people, where the different cultures, experiences and technologies create first class products.



ITALY - Head Office PERF, Design & R&D Center

GROUP OPERATIVE SITES RAHMAN INDUSTRIES LIMITED

ITALY

INDIA

UAE

FRANCE

SPAIN

SOUTH AFRICA

COMPANY VALUES

A name that reminds to the essence that inspired everything:
Passion for Performances.

A team of experts that have a vision, not just making shoes but creating solutions.
It isn't only a work; it is the search for the perfection in every detail.
In engineering, designing, production. Never looking for the minimal requirements. Perf create new forms, technologies, styles, establishing higher standards each time.

To experiment and innovate with just one aim: to improve performances every day.

Our collections are dedicated to the heroes of our times, to all workers. From the ones building skyscrapers, roads, cars and ships or extracting oil and gas in the most extreme environments, to the people that make our life more comfortable.

This is the PERF World. Experience in product and passion.

Making the working days simply better.



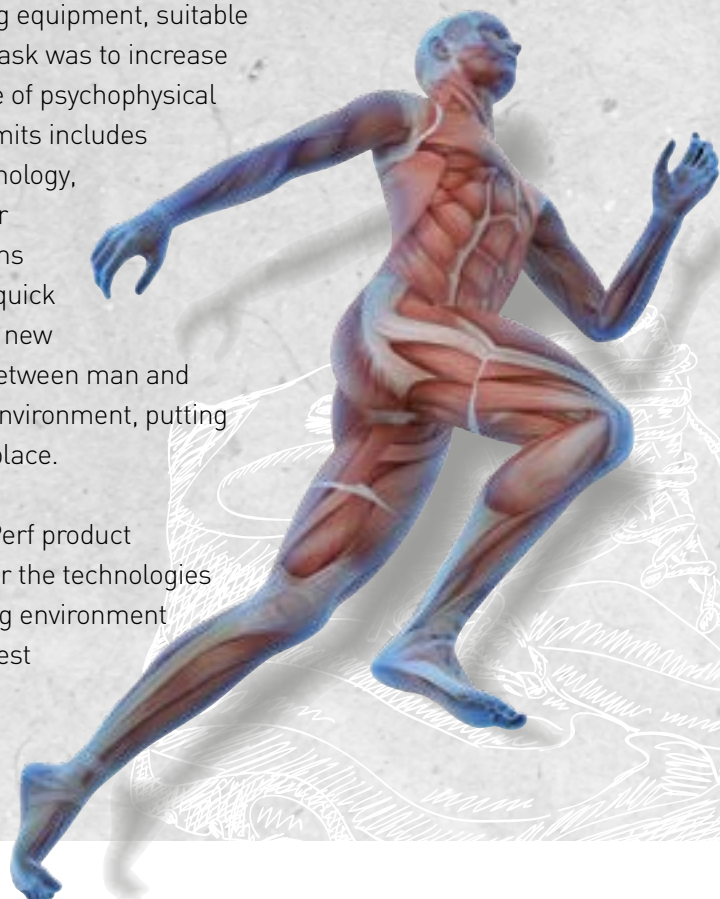


ANATOMY AND COMFORT

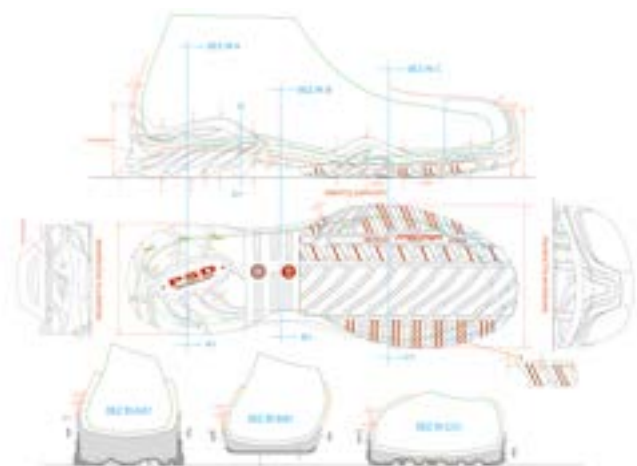
DESIGN & COMFORT

The rapid technological growth of last century allowed the creation of a more performing equipment, suitable to support the human limits. Its task was to increase and improve the work at the edge of psychophysical possibilities. The study of such limits includes knowledge of anthropology, psychology, engineering, physiology and other Sciences to elaborate new systems and technologies. Afterward the quick industrial development will bring new challenges to the relationships between man and machine, man and the working environment, putting safety and efficiency on the first place.

These are the fundamentals of Perf product development. Combining together the technologies to reduce the risks on the working environment with the best design, for the highest comfort.



ERGONOMIC=DESIGN+TECHNOLOGY



INDEX



MODEL	CATEGORY	RANGE	PAGE
ALVIT	S3 SRC	BASES	52
ASKOLD	S3 SRC	BASES	52
AVALANCHE	S3 CI SRC	RAIN & COLD E-Lite PU	44
BEAKER	S2 SRC	CHEM & FOOD	49
BEAUFORT	S3 CI SRC	RAIN & COLD E-Lite PU	41
BLACKFIRE HIGH	S1P SRC	E-LITE	34
BLACKFIRE HIGH ESD	S1P SRC, ESD	E-LITE ESD	47
BLACKFIRE LOW	S1P SRC	E-LITE	34
BLACKFIRE LOW ESD	S1P SRC, ESD	E-LITE ESD	47
BLIZZARD	S1P SRC	E-LITE	37
BOSTON HIGH	S3 SRC	METROPOLIS	22
BOSTON LOW	S3 SRC	METROPOLIS	22
BURG	S2 SRC	METROPOLIS	51
BOZEN	S3 CI HRO SRC	RAIN & COLD Vibram	18
BROOKLYN	I/C 75, EH, PR	METROPOLIS	21
CHICAGO	S1P SRC	METROPOLIS	25
COMMANDER	S3 HRO SRC	E-LITE	39
CORK	S1P SRC	BASES	53
DALLAS	S3 SRC	METROPOLIS	23
DESERT	S1P SRC	E-LITE	38
ENDURANCE ESD	S3 SRC, ESD	E-LITE ESD	46
ENDURANCE HIGH	S3 SRC	E-LITE	27
ENDURANCE LOW	S3 SRC	E-LITE	27
FIGHTER HIGH	S3 HRO SRC	CROSSOVER	13
FIGHTER LOW	S3 HRO SRC	CROSSOVER	13
FLANKER	S1P SRC	E-LITE	35
FLASK	S2 SRC	CHEM & FOOD	50
FLASK BLACK	S2 SRC	CHEM & FOOD	50
FORCE 3	S1P SRC	E-LITE	35
FORCE 4	S1P SRC	E-LITE	36
GALE	S1P SRC	E-LITE	33
GLACIER	S3 CI SRC	RAIN & COLD E-Lite PU	44
GRAVITY ONE	S1P SRC	ZERO GRAVITY	8
GRAVITY TWO	S3 SRC	ZERO GRAVITY	7
GRAVITY THREE	S3 SRC	ZERO GRAVITY	7
GRAVITY FOUR	S3 SRC	ZERO GRAVITY	9
GRAVITY ZERO	S1P SRC	ZERO GRAVITY	8
GRAVITY SPECIAL	O3 WR SRC	ZERO GRAVITY	9
GREENLAND	S3 CI SRC	RAIN & COLD E-Lite PU	43
HAMBURG	S3 CI SRC	RAIN & COLD E-Lite PU	41
HARRIER	S3 HRO SRC	CROSSOVER	14

MODEL	CATEGORY	RANGE	PAGE
6HILDA	S1P SRC	BASES	53
HURRICANE	S1P SRC	E-LITE	32
HURRICANE ESD	S1P SRC, ESD	E-LITE ESD	46
INTRUDER	S3 CI HRO SRC	RAIN & COLD Vibram	19
JAGUAR	S1 P SRC	PREDATOR	11
KEY LARGO	S1P SRC	METROPOLIS	24
KEY SOUTH	S1P SRC	METROPOLIS	23
KEY WEST	S1P SRC	METROPOLIS	24
KITZBUEHEL WR	S3 WR HRO SRC	RAIN & COLD Vibram	17
LEOPARD	S3 SRC	PREDATOR	11
LION	S1 P SRC	PREDATOR	11
MAC	S2 SRC	METROPOLIS	51
MIXER	S2 SRC	CHEM & FOOD	49
MUNICH	S3 CI HRO SRC	RAIN & COLD Vibram	17
NEW ORLEANS	S1P SRC	METROPOLIS	25
NORFOLK	S3 SRC	E-LITE	40
NOVOSIBIRSK	S3 CI SRC	RAIN & COLD E-Lite PU	43
PATROL	S1P SRC	E-LITE	38
PB10	S3 HRO SRC	DDR	54
PB10C	S3 HRO SRC	DDR	54
PB15C	S3 HRO SRC	DDR	55
PB15CZ	S3 HRO SRC	DDR	55
PB16	S3 HRO SRC	DDR	57
RICHTER	S3 SRC	E-LITE	40
SCUD	S3 HRO SRC	CROSSOVER	14
SLIDE	S2 SRC	CHEM & FOOD	50
SLIDE BLACK	S2 SRC	CHEM & FOOD	51
SNIPER BLACK	S3 SRC	E-LITE	29
SNIPER BROWN	S3 SRC	E-LITE	28
STILLER	S2 SRC	CHEM & FOOD	49
TEMPEST	S1P SRC	E-LITE	37
THUNDER	S1P SRC	E-LITE	36
TORNADO HIGH	S3 SRC	E-LITE	31
TORNADO LOW	S3 SRC	E-LITE	31
TROPIC	S1P SRC	E-LITE	33
TYPHOON HIGH	S3 SRC	E-LITE	30
TYPHOON LOW	S3 SRC	E-LITE	30
WELDER	S3 HRO SRC	E-LITE Vibram	15
YMIR	S1P SRC	BASES	53
ZERMATT WR	S3 WR SRC	RAIN & COLD E-Lite PU	45

ZERO GRAVITY



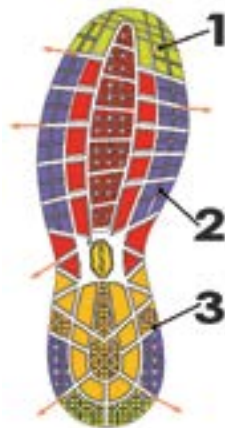
ZERO GRAVITY collection

RUNNER

TECHNOLOGY



Boa® Closure System



- | | | |
|-----------|----------|---------------|
| GRIP | BRAKING | CUSHIONING |
| STABILITY | TRACTION | SELF-CLEANING |

F3000 TECHNOLOGY DESIGN AND TECHNOLOGY

- Large contact area for GRIP ON INDUSTRIAL CONTAMINATED FLOORS
- Stability zone for SAFETY and COMFORT
- Oil draining channels to enhance GRIP and SAFETY

COMPOUND

- High-performance compound for safety at work
- EN ISO 20345, SRC slip resistant performance requirements better than normal standard
- Oil resistant, non-marking compound is available as antistatic and/or insulative

ALU-S ALUMINIUM 200J TOE CAP Ergonomic shape to improve comfort and shoe design. 50% lighter than steel toecap.

ALU-S



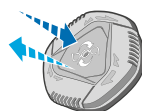


Boa® Closure System

EXPERIENCE THE DIFFERENCE Boa®

- + Perfect fit
- + Fine adjustment
1 click = 1 mm
- + Fast and easy
- + Safe
- + Solid

HOW IT WORKS



Push in to engage
Pull for quick release



Turn to tighten
Turn to loosen

Boa® IP1



GRAVITY TWO

S3 SRC

UPPER	Water resistant leather with anti-abrasion leather
LINING	bdry
TOE CAP	ALU-S
MIDSOLE	Shield PRO non-mettalic
FOOTBED	HSR
SOLE	Phylon/rubber Vibram®
SIZE	38-47



Boa® Closure System



GRAVITY THREE

S3 SRC



ZERO GRAVITY



GRAVITY ZERO S1P SRC



UPPER	Dry-Tech, 3D highly breathable fabric
LINING	bdry
TOE CAP	ALU-S
MIDSOLE	Shield PRO non-metallic
FOOTBED	HSR
SOLE	Phylon/rubber Vibram®
SIZE	38-47

GRAVITY ONE S1P SRC

UPPER	Dry-Tech, 3D highly breathable fabric
LINING	bdry
TOE CAP	ALU-S
MIDSOLE	Shield PRO non-metallic
FOOTBED	HSR
SOLE	Phylon/rubber Vibram®
SIZE	38-47





GRAVITY FOUR

S1 P SRC



UPPER	Dry-Tech, 3D highly breathable fabric
LINING	bdry
TOE CAP	ALU-S
MIDSOLE	Shield PRO non-metallic
FOOTBED	HSR
SOLE	Phylon/rubber Vibram®
SIZE	38-47



GRAVITY SPECIAL

03 WR SRC

UPPER	Water resistant leather
LINING	PERF-DRY120 membrane, totally waterproof and breathable
FOOTBED	HSR
SOLE	Phylon/rubber Vibram®
SIZE	38-47

Standard: EN ISO 20347:2012





KK komfort technology

- **XL TOE CAP COMPOSITE EXTRA LARGE**
- **XL ERGONOMIC**
- **METAL FREE LINE**
- **ADVANCED SLIP RESISTANT PU SOLE**

TECHONLOGY "POSITIVE SHOCK DEVICE"

PSD
TECHNOLOGY



LINING

extremely breathable polyamide lining. It absorbs moisture quickly and ensures a greater comfort during the whole working day. Optimal resistance to abrasion and anti-bacterial.

bdry

Non-magnetic **TOE CAP** of composite materials. 50% lighter than steel.

XLTOP
DEFENCE

PERF SOLUTION FOR YOUR FEET COMFORT

PERF creates safety shoes that can be provided with optional orthotic insoles in accordance with the norm BGR 191.

The person who suffers from foot pathologies and orthopaedic malformations can continue comfortably working activity by wearing safety shoes provided with orthotic insoles tailored to their foot and be sure that all normative safety requirements are fulfilled and protection against negative effects of false postures and pain is guaranteed. The logo BGR 191 is placed on the safety shoes where it is possible to place optional orthotic insoles.

BGR191



LEOPARD S3 SRC

UPPER	Leather	
LINING	bdry	
TOE CAP	XLTAP DEFENCE	non metallic
MIDSOLE	Shield PRO	non metallic
FOOTBED	PSD	
SOLE	PREDATOR PU/PU	
SIZE	36-47	

BGR191



LION ESD S1 P SRC, ESD

UPPER	Leather and Dry-Tech, 3D highly breathable fabric. With anti-abrasion leather.	
LINING	bdry	
TOE CAP	XLTAP DEFENCE	non metallic
MIDSOLE	Shield PRO	non metallic
FOOTBED	PSD	
SOLE	PREDATOR PU/PU	
SIZE	36-47	



BGR191



JAGUAR S1 P SRC

UPPER	Suede leather	
LINING	bdry	
TOE CAP	XLTAP DEFENCE	non metallic
MIDSOLE	Shield PRO	non metallic
FOOTBED	PSD	
SOLE	PREDATOR PU/PU	
SIZE	36-47	

BGR191



**SUITABLE FOR ANY CONDITION
LIGHT AND TOUGH
COMPOSITE TOE CAP**

TECHNOLOGY



VIBRAM® SOLE

- HIGHER RUBBER PROFILE FOR EXTREME CONDITION USE
- WATER RESISTANT UPPER AND HEAT RESISTANT SOLE
- PSD TECHNOLOGY AND PSD ADDITIONAL FOOTBED
- PU/VIBRAM® RUBBER

Vibram® and the Vibram® logo are trademarks of Vibram® SpA



POSITIVE SHOCK DEVICE TECHNOLOGY

Optimal absorption of strains on the vertebral column thanks to the use of expanded PU, combined with memory effect and concaved surface.

FOOTBED

PSD

INSOLE - PU 10 mm expanded, covered with antibacterial fabric.

Non-magnetic **TOECAP**, of composite materials. 50% lighter than steel.

MIDSOLE Non-magnetic, puncture resistant composite fabric plate. It is 40% lighter and more flexible than steel plate and at the same time guarantees an optimal protection covering 100% of the foot surface.

LINING extremely breathable polyamide lining. It absorbs moisture quickly and ensures a greater comfort during the whole working day. Optimal resistance to abrasion and anti-bacterial.

PSD
TECHNOLOGY

TAP
DEFENCE

Shield PRO

bdry

SOLE CROSSOVER



PERF 

ADHERENCE

TEST RESULTS "SLIP RESISTANCE" - Standard EN ISO 20345:2011, requirement SRC

SRA - Ceramic testing ground with detergent

Flat sole: 0,46 [Standard value: $\geq 0,32$]

44% higher performance than minimum required values

With a heel incline: 0,34 [Standard value: $\geq 0,28$]

22% higher performance than minimum required values

PROLONGED SERVICE LIFE

Abrasion resistance - Standard EN ISO 20345:2011

Standard value: < 150 mm³

Test result: 50 mm³

33% higher performance than minimum required values



FIGHTER HIGH S3 HRO SRC

UPPER	Water resistant full grain leather	
LINING	bdry	
TOE CAP	TAP DEFENCE	non metallic
MIDSOLE	Shield PRO	non metallic
FOOTBED	PSD	
SOLE	CROSSOVER PU/rubber Vibram®	
SIZE	38-47	



FIGHTER LOW S3 HRO SRC

UPPER	Water resistant full grain leather	
LINING	bdry	
TOE CAP	TAP DEFENCE	non metallic
MIDSOLE	Shield PRO	non metallic
FOOTBED	PSD	
SOLE	CROSSOVER PU/rubber Vibram®	
SIZE	38-47	



CROSSOVER



SCUD S3 HRO SRC

UPPER	Water resistant full grain leather
LINING	bdry
TOE CAP	TAP DEFENCE non metallic
MIDSOLE	Shield PRO non metallic
FOOTBED	PSD
SOLE	CROSSOVER PU/rubber Vibram®
SIZE	38-47

Not in stock. Available upon request

HARRIER S3 HRO SRC



UPPER	Water resistant full grain leather
LINING	bdry
TOE CAP	TAP DEFENCE non metallic
MIDSOLE	Shield PRO non metallic
FOOTBED	PSD
SOLE	CROSSOVER PU/rubber Vibram®
SIZE	38-47





WELDER S3 HRO SRC

UPPER	Water resistant leather. Lacets protection with velcro binding
LINING	bdry
TOE CAP	TAP DEFENCE non metallic
MIDSOLE	Shield PRO non metallic
FOOTBED	PSD
SOLE	CROSSOVER PU/Vibram® rubber, contact heat resistant up to 300 °C
SIZE	38-47

SPECIFIC FOR WELDING





OPTIMAL THERMAL COMFORT, EVEN AT VERY LOW
TEMPERATURES



EXTREME PERFORMANCES FOR EXTREME CONDITIONS

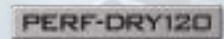
HIGHER VIBRAM® RUBBER PROFILE FOR EXTREME USAGE
CONDITIONS

RAIN & COLD Vibram

TECHNOLOGY

PROTECTION FROM WATER

- Innovative waterproof breathable membrane
- Microporous structure, strong, resistant, light and ultrathin
- Integral part of the upper, joined with an abrasion resistant lining



WR – completely water resistant shoe

PERF shoes test with PERF-DRY120 membrane:

minimum 120 minutes (required value: 80 minutes)

water resistance performance 67 % higher than minimum required
values

WATERPROOF

PROTECTION FROM COLD UP TO -30°C

- insulating material, thin, light, breathable, made of a microfiber network built to trap air
- maintains the inner shoe perfect thermal microclimate for long hours of hard wearing
- prevents heat losses and keeps feet warm even in damp conditions



400 gr

Thinsulate®, Thinsulate® Ultra Insulation and the logos are the trademarks of 3M Company.



KITZBUEHEL WR

S3 WR HRO SRC

UPPER	Water resistant nubuck leather, high visibility rear insert	
WATERPROOF	PERF-DRY120 membrane, totally waterproof and breathable	
LINING	bdry	
TOE CAP	TAP DEFENCE	non metallic
MIDSOLE	Shield PRO	non metallic
FOOTBED	PSD	
SOLE	CROSSOVER PU/rubber Vibram®	
SIZE	38-47	

WATERPROOF
PERF-DRY120



WATERPROOF
PERF-DRY120



MUNICH

S3 CI HRO SRC

UPPER	Water resistant full grain leather. Side zip for easy pull on	
LINING	Synthetic fur for thermal insulation	
TOE CAP	TAP DEFENCE	non metallic
MIDSOLE	Shield PRO	non metallic
FOOTBED	PSD	
SOLE	CROSSOVER PU/rubber Vibram®	
SIZE	38-47	



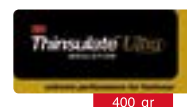
RAIN & COLD
Vibram



BOZEN S3 CI HRO SRC

UPPER	Water resistant full grain leather, pull upfinishing
LINING	bdry eThinsulate™ Ultra Insulation 400 gr, thermo-insulating fabric effective up to 30°C below zero
TOE CAP	TAP DEFENCE non metallic
MIDSOLE	Shield PRO non metallic
FOOTBED	PSD
SOLE	CROSSOVER PU/rubber Vibram®
SIZE	38-47

Not in stock. Available upon request

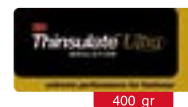


**PROTECTION FROM
COLD UP TO -30°C**



INTRUDER S3 CI HRO SRC

UPPER	Water resistant full grain leather, pull upfinishing	
LINING	bdy eThinsulate™ Ultra Insulation 400 gr, thermo-insulating fabric effective up to 30°C below zero	
TOE CAP	TAP DEFENCE	non metallic
MIDSOLE	Shield PRO	non metallic
FOOTBED	PSD	
SOLE	CROSSOVER PU/rubber Vibram®	
SIZE	38-47	



**PROTECTION FROM
COLD UP TO -30°C**



**"URBAN" DESIGN. DYNAMIC AND AGGRESSIVE
LIGHT AND BREATHABLE
ALUMINIUM TOE CAP**

TECHNOLOGY



METROPOLIS SOLE PU/PTU

- **FLAT SOLE FOR A BETTER STABILITY**
- **HIGH SLIP RESISTANCE PERFORMANCE**

TEST RESULTS "SLIP RESISTANCE" - Standard EN ISO 20345:2011, requirement SRC

SRA - Ceramic testing ground with detergent

flat sole: 0,39 (Standard value: $\geq 0,32$)

with a heel incline: 0,30 (Standard value: $\geq 0,28$)

SRB - Steel testing ground with glycerine

flat sole: 0,28 (Standard value: $\geq 0,18$)

with a heel incline: 0,14 (Standard value: $\geq 0,13$)

MULTIPOWER

FOOTBED Assures a cushioning effect on all the foot surface thanks to the multiple 3D-structure in soft PU. Antistatic, breathable, lined with anti-abrasion fabric.

ALU-S aluminium 200J **TOE CAP ALU-S** Ergonomic shape to improve comfort and shoe design. 50% lighter than steel toecaps.

SOLE ANTI-PERFORATION

- Non-magnetic, made of composite materials
- 40% lighter and more flexible than steel
- Optimal protection, covering 100% of the foot surface



ALU-S



Shield PRO



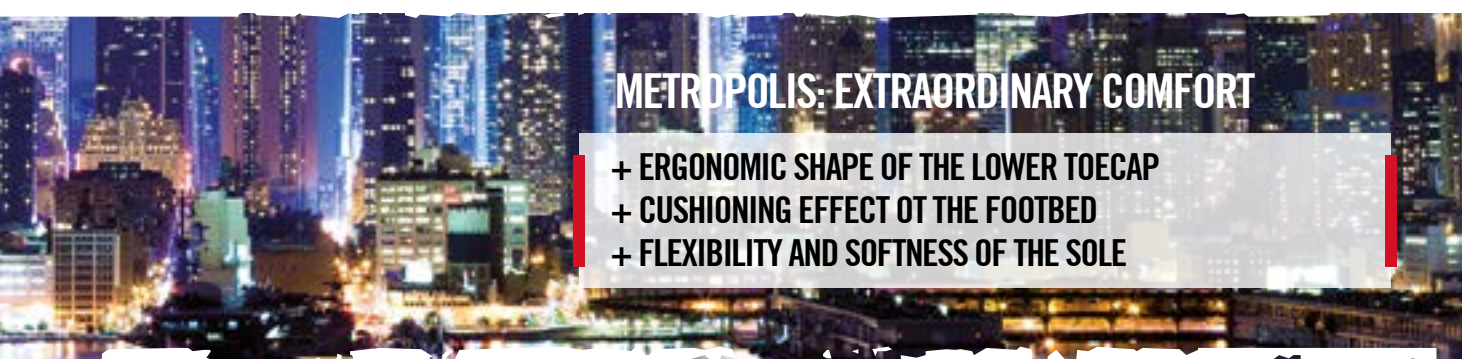
BROOKLYN

I/C 75, EH, PR



UPPER	Water resistant full grain leather
LINING	3D breathable fabric
TOE CAP	ALU-S
MIDSOLE	Shield PRO non metallic
FOOTBED	MULTIPOWER
SOLE	METROPOLIS PU/TPU dual color
SIZE	38-47

Standard: ASTM F 2413-11



METROPOLIS: EXTRAORDINARY COMFORT

- + ERGONOMIC SHAPE OF THE LOWER TOECAP
- + CUSHIONING EFFECT OF THE FOOTBED
- + FLEXIBILITY AND SOFTNESS OF THE SOLE

METROPOLIS



BOSTON HIGH S3 SRC

UPPER	Water resistant full grain leather
LINING	3D breathable fabric
TOE CAP	ALU-S
MIDSOLE	Shield PRO non metallic
FOOTBED	MULTIPOWER
SOLE	METROPOLIS PU/TPU
SIZE	38-47

BOSTON LOW S3 SRC

UPPER	Water resistant full grain leather
LINING	3D breathable fabric
TOE CAP	ALU-S
MIDSOLE	Shield PRO non metallic
FOOTBED	MULTIPOWER
SOLE	METROPOLIS PU/TPU
SIZE	38-47





PERFORM®



DALLAS S3 SRC

UPPER	Water resistant full vintage leather
LINING	3D breathable fabric
TOE CAP	ALU-S
MIDSOLE	Shield PRO non metallic
FOOTBED	MULTIPOWER
SOLE	METROPOLIS PU/TPU
SIZE	38-47

KEY SOUTH S1P SRC

UPPER	Suede leather
LINING	3D breathable fabric
TOE CAP	ALU-S
MIDSOLE	Shield PRO non metallic
FOOTBED	MULTIPOWER
SOLE	METROPOLIS PU/TPU
SIZE	38-47



METROPOLIS



KEY LARGO S1P SRC

UPPER	Suede leather
LINING	3D breathable fabric
TOE CAP	ALU-S
MIDSOLE	Shield PRO non metallic
FOOTBED	MULTI POWER
SOLE	METROPOLIS PU/TPU
SIZE	38-47

KEY WEST S1P SRC

UPPER	Suede leather
LINING	3D breathable fabric
TOE CAP	ALU-S
MIDSOLE	Shield PRO non metallic
FOOTBED	MULTI POWER
SOLE	METROPOLIS PU/TPU
SIZE	38-47



PERF



CHICAGO S1P SRC

UPPER	Canvas textile and vintage leather
LINING	3D breathable fabric
TOE CAP	ALU-S
MIDSOLE	Shield PRO non metallic
FOOTBED	MULTIPOWER
SOLE	METROPOLIS PU/TPU
SIZE	38-47

NEW ORLEANS S1P SRC

UPPER	Canvas textile and vintage leather
LINING	3D breathable fabric
TOE CAP	ALU-S
MIDSOLE	Shield PRO non metallic
FOOTBED	MULTIPOWER
SOLE	METROPOLIS PU/TPU
SIZE	38-47





TOTALLY METAL FREE
LIGHT AND TOUGH
IMPROVED ENERGY ABSORPTION ON THE HEEL REGION
PU EXTRA INSOLE

E-LITE
collection

TECHNOLOGIE



E-LITE SOLE

- MAXIMUM STABILITY
- INCREASED COEFFICIENT OF SLIP RESISTANCE
- DOUBLE DENSITY PU WITH PSD INSERT

POSITIVE SHOW DEVICE TECHNOLOGY

Optimal absorption of strains on the vertebral column thanks to the use of expanded PU, combined with memory effect concaved surface.

PSD
TECHNOLOGY

FOOTBED

PSD

INSOLE - PU 10 mm expanded, covered with antibacterial fabric.



Non-magnetic **TOE CAP** of composite materials. 50% lighter than steel.



TOP
DEFENCE

MIDSOLE

Non-magnetic, puncture resistant composite fabric plate. It is 40% lighter and more flexible than steel plate and at the same time guarantees an optimal protection covering 100% of the foot surface.

Shield PRO

LINING

extremely breathable polyamide lining. It absorbs moisture quickly and ensures a greater comfort during the whole working day. Optimal resistance to abrasion and anti-bacterial.

bdry

MATERIAL

light and ultra-breathable synthetic fabric, maintains the internal microclimate at the ideal level even at high temperatures. Guarantees exceptional resistance to abrasion.



FRESH
tech

LEATHER

Water resistant full grain leather, ideal against oils and hydrocarbons.



TOP 37



SOLE E-LITE PU/PU

ADHERENCE

Test results "Slip resistance" – Standard EN ISO 20345:2011 Requirement SRC (SRA+SRB)

SRA – Ceramic testing ground with detergent

flat shoe: 0,46 (Standard value: > 0,32) with a heel incline: 0,33 (Standard value: > 0,28)

ABRASION RESISTANCE

Standard EN ISO 20345:2011

Standard value: < 150 mm³

Test result: 45 mm³

ENDURANCE HIGH S3 SRC



UPPER	Water resistant full grain and abrasion resistant leather	
LINING	bdry	
TOE CAP	TAP DEFENCE	non metallic
MIDSOLE	Shield PRO	non metallic
FOOTBED	PSD	
SOLE	E-LITE PU/PU	
SIZE	36-48	

ENDURANCE LOW S3 SRC

UPPER	Water resistant full grain and abrasion resistant leather	
LINING	bdry	
TOE CAP	TAP DEFENCE	non metallic
MIDSOLE	Shield PRO	non metallic
FOOTBED	PSD	
SOLE	E-LITE PU/PU	
SIZE	36-48	



BGR191

E·LITE



SNIPER BROWN

S3 SRC



UPPER	Water resistant nubuck leather
LINING	bdry
TOE CAP	TAP DEFENCE non metallic
MIDSOLE	Shield PRO non metallic
FOOTBED	PSD
SOLE	E·LITE PU/PU
SIZE	36-47





SNIPER BLACK

S3 SRC



UPPER	Water resistant nubuck leather	
LINING	bdry	
TOE CAP	TAP DEFENCE	non metallic
MIDSOLE	Shield PRO	non metallic
FOOTBED	PSD	
SOLE	E-LITE PU/PU	
SIZE	36-47	

BGR191



E·LITE



TYPHOON HIGH S3 SRC

UPPER	Water resistant nubuck leather with anti-abrasion leather
LINING	bdry
TOE CAP	TAP DEFENCE non metallic
MIDSOLE	Shield PRO non metallic
FOOTBED	PSD
SOLE	E·LITE PU/PU
SIZE	36-47

BGR191

TYPHOON LOW S3 SRC

UPPER	Water resistant nubuck leather with anti-abrasion leather
LINING	bdry
TOE CAP	TAP DEFENCE non metallic
MIDSOLE	Shield PRO non metallic
FOOTBED	PSD
SOLE	E·LITE PU/PU
SIZE	36-47



BGR191



PERF®



TORNADO HIGH S3 SRC

UPPER	Water resistant nubuck leather
LINING	bdry
TOE CAP	TAP DEFENCE non metallic
MIDSOLE	Shield PRO non metallic
FOOTBED	PSD
SOLE	E-LITE PU/PU
SIZE	36-48

BGR191

TORNADO LOW S3 SRC

UPPER	Water resistant nubuck leather
LINING	bdry
TOE CAP	TAP DEFENCE non metallic
MIDSOLE	Shield PRO non metallic
FOOTBED	PSD
SOLE	E-LITE PU/PU
SIZE	36-48

BGR191



E·LITE



HURRICANE S1P SRC

UPPER	Nubuck leather. Double velcro bindings	
LINING	bdry	
TOE CAP	TAP DEFENCE	non metallic
MIDSOLE	Shield PRO	non metallic
FOOTBED	PSD	
SOLE	E·LITE PU/PU	
SIZE	36-47	





GALE S1P SRC

UPPER	Leather. Double velcro bindings
LINING	bdry
TOE CAP	TAP DEFENCE non metallic
MIDSOLE	Shield PRO non metallic
FOOTBED	PSD
SOLE	E-LITE PU/PU
SIZE	36-47



TROPIC S1P SRC

UPPER	Leather. Double velcro bindings
LINING	bdry
TOE CAP	TAP DEFENCE non metallic
MIDSOLE	Shield PRO non metallic
FOOTBED	PSD
SOLE	E-LITE PU/PU
SIZE	36-47



E·LITE



BLACKFIRE HIGH S1P SRC

UPPER	Suede and abrasion resistant leather with nylon inserts
LINING	bdry
TOE CAP	TAP DEFENCE non metallic
MIDSOLE	Shield PRO non metallic
FOOTBED	PSD
SOLE	E·LITE PU/PU
SIZE	36-47



BLACKFIRE LOW S1P SRC

UPPER	Suede and abrasion resistant leather with nylon inserts
LINING	bdry
TOE CAP	TAP DEFENCE non metallic
MIDSOLE	Shield PRO non metallic
FOOTBED	PSD
SOLE	E·LITE PU/PU
SIZE	36-47





PERFORM®

FLANKER S1P SRC



UPPER	Suede leather with camouflage breathable fabric insert
LINING	bdry
TOE CAP	TAP DEFENCE non metallic
MIDSOLE	Shield PRO non metallic
FOOTBED	PSD
SOLE	E-LITE PU/PU
SIZE	38-47

FORCE 3 S1P SRC

UPPER	Perforated suede leather
LINING	bdry
TOE CAP	TAP DEFENCE non metallic
MIDSOLE	Shield PRO non metallic
FOOTBED	PSD
SOLE	E-LITE PU/PU
SIZE	38-47



E·LITE



FORCE 4 S1P SRC

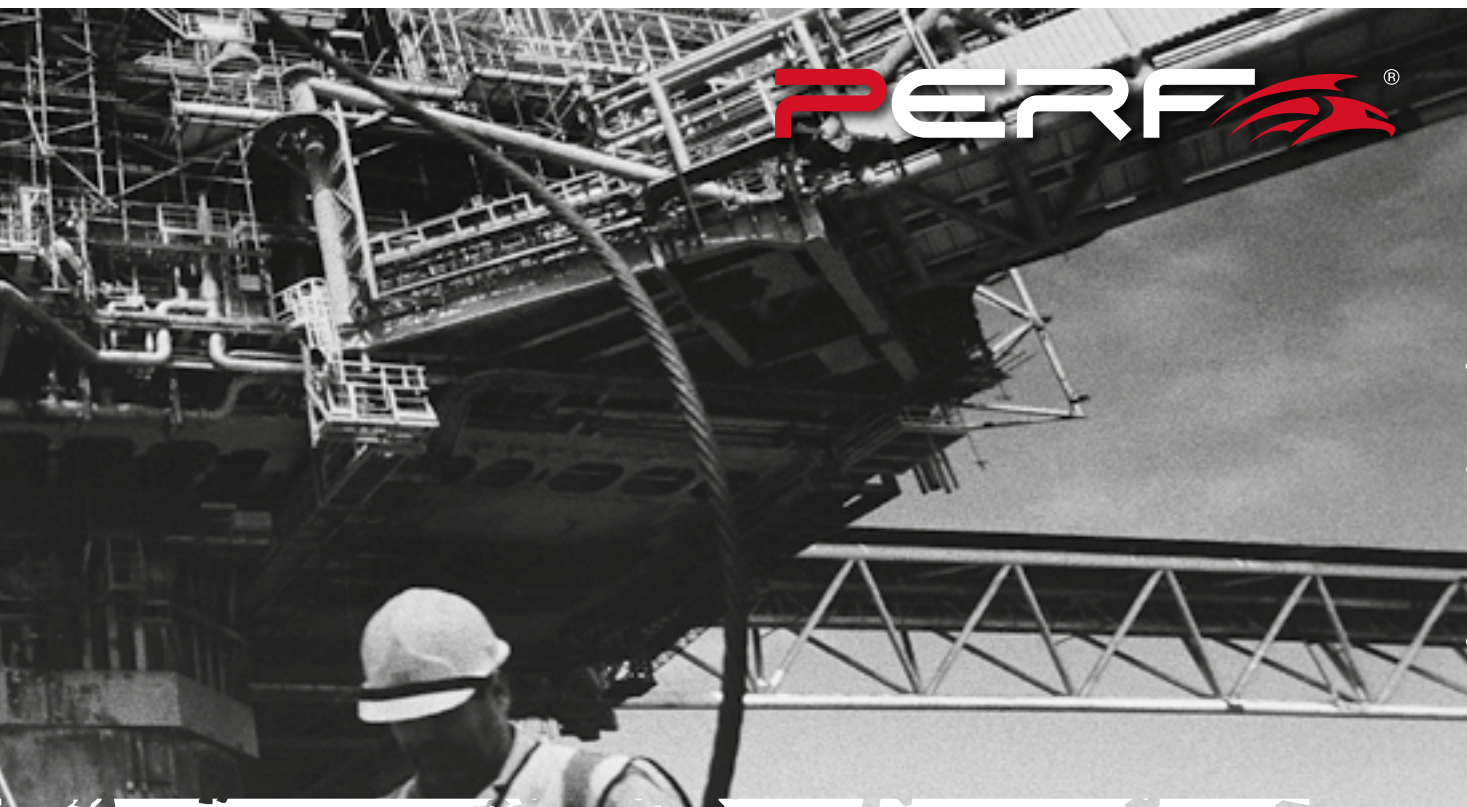


UPPER	Perforated suede leather
LINING	bdry
TOE CAP	TAP DEFENCE non metallic
MIDSOLE	Shield PRO non metallic
FOOTBED	PSD
SOLE	E·LITE PU/PU
SIZE	36-47

THUNDER S1P SRC

UPPER	Suede leather with breathable fabric insert fresh tech
LINING	bdry
TOE CAP	TAP DEFENCE non metallic
MIDSOLE	Shield PRO non metallic
FOOTBED	PSD
SOLE	E·LITE PU/PU
SIZE	36-47





PERF®



TEMPEST S1P SRC

UPPER	Perforated suede leather
LINING	bdry
TOE CAP	TAP DEFENCE non metallic
MIDSOLE	Shield PRO non metallic
FOOTBED	PSD
SOLE	E-LITE PU/PU
SIZE	36-47

BLIZZARD S1P SRC

UPPER	Perforated leather
LINING	bdry
TOE CAP	TAP DEFENCE non metallic
MIDSOLE	Shield PRO non metallic
FOOTBED	PSD
SOLE	E-LITE PU/PU
SIZE	36-47



E·LITE



PATROL S1P SRC



UPPER	Full grain leather with abrasion resistant technical fabric inserts. YKK waterproof zip for side easy pull on	
LINING	bdry	
TOE CAP	TAP DEFENCE	non metallic
MIDSOLE	Shield PRO	non metallic
FOOTBED	PSD	
SOLE	E·LITE PU/PU	
SIZE	38-47	

Not in stock.Available upon request

DESERT S1P SRC

UPPER	Full grain leather with abrasion resistant technical fabric inserts. YKK waterproof zip for side easy pull on	
LINING	bdry	
TOE CAP	TAP DEFENCE	non metallic
MIDSOLE	Shield PRO	non metallic
FOOTBED	PSD	
SOLE	E·LITE PU/PU	
SIZE	38-47	



Not in stock.Available upon request



COMMANDER S3 HRO SRC

UPPER	Water resistant full grain leather. Side tabs for quick and easy pull on
LINING	bdry
TOE CAP	TAP DEFENCE non metallic
MIDSOLE	Shield PRO non metallic
FOOTBED	PSD
SOLE	CROSSOVER PU/caoutchouc Vibram®
SIZE	38-47



E·LITE



NORFOLK S3 SRC

UPPER	TOP37 water resistant full grain leather, ideal against oils and hydrocarbons. Side tabs for quick and easy pull on.
LINING	bdry
TOE CAP	TAP DEFENCE non metallic
MIDSOLE	Shield PRO non metallic
FOOTBED	PSD
SOLE	E·LITE PU/PU
SIZE	36-47

RICHTER S3 SRC

UPPER	Water resistant leather. Side tabs for quick and easy pull on.
LINING	bdry
TOE CAP	TAP DEFENCE non metallic
MIDSOLE	Shield PRO non metallic
FOOTBED	PSD
SOLE	E·LITE PU/PU
SIZE	38-47





PERF®



BEAUFORT

S3 CI SRC

UPPER	TOP37 water resistant full grain leather, ideal against oils and hydrocarbons. Side tabs for quick and easy pull on.
LINING	Synthetic fur for thermal insulation
TOE CAP	TAP DEFENCE non metallic
MIDSOLE	Shield PRO non metallic
FOOTBED	PSD
SOLE	E-LITE PU/PU
SIZE	38-48

HAMBURG

S3 CI SRC

UPPER	Water resistant full grain leather. Side zip for easy pull on.
LINING	Synthetic fur for thermal insulation
TOE CAP	TAP DEFENCE non metallic
MIDSOLE	Shield PRO non metallic
FOOTBED	PSD
SOLE	E-LITE PU/PU
SIZE	38-47

Not in stock. Available upon request





EXTREME PERFORMANCE FOR EXTREME
WEATHER CONDITIONS
OPTIMAL THERMAL COMFORT, EVEN AT
VERY LOW TEMPERATURES
SOLE E-LITE PU BI-DENSITY

RAIN & COLD
E-Lite PU

TECHNOLOGY

PROTECTION FROM WATER

- Innovative waterproof breathable membrane
- Microporous structure, strong, resistant, light and ultrathin
- Integral part of the upper, joined with an abrasion resistant lining

PERF-DRY120

WR – completely water resistant shoe

PERF shoes test with PERF-DRY120 membrane:

minimum 120 minutes (required value: 80 minutes)

water resistance performance 67% higher than minimum required values

WATERPROOF



PERF®



GREENLAND S3 CI SRC

UPPER	Water resistant nubuck leather, high visibility rear insert.
LINING	bdry eThinsulate™ Ultra Insulation 400 gr, thermo-insulating fabric effective up to 30°C below zero.
TOE CAP	TAP DEFENCE non metallic
MIDSOLE	Shield PRO non metallic
FOOTBED	PSD
SOLE	E-LITE PU/PU
SIZE	38-47



NOVOSIBIRSK S3 CI SRC

UPPER	Water resistant nubuck leather, high visibility rear insert.
LINING	Fully lined with natural fur for thermal insulation.
TOE CAP	TAP DEFENCE non metallic
MIDSOLE	Shield PRO non metallic
FOOTBED	PSD
SOLE	E-LITE PU/PU
SIZE	38-47

Not in stock. Available upon request

RAIN & COLD
E-Lite PU



AVALANCHE S3 CI SRC



UPPER	Water resistant leather
LINING	Synthetic fur for thermal insulation
TOE CAP	TAP DEFENCE non metallic
MIDSOLE	Shield PRO non metallic
FOOTBED	PSD
SOLE	E-LITE PU/PU
SIZE	36-47

GLACIER S3 CI SRC

UPPER	Water resistant leather
LINING	Synthetic fur for thermal insulation
TOE CAP	TAP DEFENCE non metallic
MIDSOLE	Shield PRO non metallic
FOOTBED	PSD
SOLE	E-LITE PU/PU
SIZE	36-47





ZERMATT WR

S3 WR SRC

UPPER	Water resistant nubuck leather, high visibility rear insert.
WATERPROOF	PERF-DRY120 membrane, totally waterproof and breathable.
LINING	bdry
TOE CAP	TAP DEFENCE non metallic
MIDSOLE	Shield PRO non metallic
FOOTBED	PSD
SOLE	E-LITE PU/PU
SIZE	38-47



WATERPROOF

PERF-DRY120



ESD = Electro Static Discharge
EPA = ESD Protected Areas. The areas where the ESD protection devices are mandatory required to be worn



Ideal for the automotive industry and for traditional industrial and service sectors, when there is a necessity to curb the build-up of static electricity. PERF ESD/EPA safety footwear dissipate electrostatic charge to ground, thus protecting both wearers and sensitive electronic components.

A shoe is referred to as an ESD/EPA shoe if the contact resistance is within the recommended range of $7,5 \times 10^5$ e $3,5 \times 10^7$ Ohm. The contact resistance of ESD/EPA shoes lies within the lower antistatic range of shoes for general industrial application. PERF ESD/EPA footwear have to be worn when the electrostatic charge needs to be dissipated to ground.

ENDURANCE ESD

S3 SRC, ESD

UPPER	Water resistant full grain leather and abrasion resistant leather.	
LINING	bdry	
TOE CAP	TAP DEFENCE	non metallic
MIDSOLE	Shield PRO	non metallic
FOOTBED	PSD	
SOLE	E·LITE PU/PU	
SIZE	36-47	



HURRICANE ESD

S1P SRC, ESD

UPPER	Nubuck. Double velcro bindings	
LINING	bdry	
TOE CAP	TAP DEFENCE	non metallic
MIDSOLE	Shield PRO	non metallic
FOOTBED	PSD	
SOLE	E·LITE PU/PU	
SIZE	36-47	





BLACKFIRE HIGH ESD

S1P SRC, ESD



UPPER	Suede and abrasion resistant leather with nylon inserts.	
LINING	bdry	
TOE CAP	TAP DEFENCE	non metallic
MIDSOLE	Shield PRO	non metallic
FOOTBED	PSD	
SOLE	E-LITE PU/PU	
SIZE	36-47	

Not in stock. Available upon request



BLACKFIRE LOW ESD

S1P SRC, ESD



UPPER	Suede and abrasion resistant leather with nylon inserts.	
LINING	bdry	
TOE CAP	TAP DEFENCE	non metallic
MIDSOLE	Shield PRO	non metallic
FOOTBED	PSD	
SOLE	E-LITE PU/PU	
SIZE	36-47	

Not in stock. Available upon request





IDEAL FOR FOOD AND AGRICULTURAL INDUSTRIES, PHARMACEUTICAL
AND HEALTH SECTORS, CONTROLLED ENVIRONMENTS
FULFILLS ALL HYGIENE, CLEANLINESS AND SECURITY
REQUIREMENTS

CHEM & FOOD collection

TECHNOLOGY



SOLE KEM PU BI-DENSITY

- FLAT SOLE FOR A BETTER STABILITY
- OPTIMAL ANTI-SLIP PERFORMANCE, EVEN ON DIRTY AND GREASY SURFACES

Test results "Slip resistance" (EN ISO 20345:2011 – Requirement SRC)

SRA – Ceramic testing ground with detergent

flat sole: 0,45 [Standard value: $\geq 0,32$]

with a heel incline: 0,29 [Standard value: $\geq 0,28$]

SRB – Steel testing ground with glycerine

flat sole: 0,31 [Standard value: $\geq 0,18$]

with a heel incline: 0,16 [Standard value: $\geq 0,13$]

MULTIPOWER

FOOTBED Assures a cushioning effect on all the foot surface thanks to the multiple 3D-structure in soft PU. Anti-static, breathable, lined with anti-abrasion fabric.

ALU-S aluminium 200J **TOE CAP** Ergonomic shape to improve comfort and shoe design. 50% lighter than steel toecaps.

LINING extremely breathable polyamide lining. It absorbs moisture quickly and ensures a greater comfort during the whole working day. Optimal resistance to abrasion anti-bacterial.

MICROFIBER synthetic, water resistant, light, soft and breathable. Easily washable.



ALU-S

bdry



STILLER S2 SRC

UPPER	Microfiber water resistant
LINING	bdry
TOE CAP	ALU-S
FOOTBED	MULTIPOWER
SOLE	Kem PU/PU
SIZE	36-47

MIXER S2 SRC

UPPER	Microfiber water resistant
LINING	bdry
TOE CAP	ALU-S
FOOTBED	MULTIPOWER
SOLE	Kem PU/PU
SIZE	36-47



BEAKER S2 SRC

UPPER	Microfiber water resistant
LINING	bdry
TOE CAP	ALU-S
FOOTBED	MULTIPOWER
SOLE	Kem PU/PU
SIZE	36-47



SLIDE S2 SRC

UPPER	Microfiber water resistant
LINING	bdry
TOE CAP	ALU-S
FOOTBED	MULTIPOWER
SOLE	Kem PU/PU
SIZE	36-47



FLASK S2 SRC

UPPER	Microfiber water resistant
LINING	bdry
TOE CAP	ALU-S
FOOTBED	MULTIPOWER
SOLE	Kem PU/PU
SIZE	36-47

FLASK BLACK S2 SRC

UPPER	Microfiber water resistant
LINING	bdry
TOE CAP	ALU-S
FOOTBED	MULTIPOWER
SOLE	Kem PU/PU
SIZE	36-47





SLIDE BLACK S2 SRC

UPPER	Microfiber water resistant
LINING	bdry
TOE CAP	ALU-S
FOOTBED	MULTIPOWER
SOLE	Kem PU/PU
SIZE	36-47

MAC S2 SRC

UPPER	Microfiber water resistant
LINING	bdry
TOE CAP	ALU-S
FOOTBED	MULTIPOWER
SOLE	Kem PU/PU
SIZE	36-47

STANDARD: ASTM F2413-11, I/C 75 – SD
CAN/CSA Z195-14, Grade 1 – SD



BURG S2 SRC

UPPER	Microfiber water resistant
LINING	bdry
TOE CAP	ALU-S
FOOTBED	MULTIPOWER
SOLE	Kem PU/PU
SIZE	36-47

STANDARD: ASTM F2413-11, I/C 75 – SD
CAN/CSA Z195-14, Grade 1 – SD



BASE



Shoes ideal for manufacturing, construction, logistics, outdoor activities. Robust and comfortable,
With stainless steel toe cap and midsole.
Non-slip double density polyurethane sole.

BASE collection



ASKOLD S3 SRC

UPPER	Waterproof leather
LINING	bdry
TOE CAP	Steel, nickel free
MIDSOLE	Steel, nickel free
FOOTBED	Soft-tex
SOLE	BASES PU/PU
SIZE	36-47

ALVIT S3 SRC

UPPER	Waterproof leather
LINING	bdry
TOE CAP	Steel, nickel free
MIDSOLE	Steel, nickel free
FOOTBED	Soft-tex
SOLE	BASES PU/PU
SIZE	36-47





CORK S1P SRC

UPPER	Suede leather
LINING	bdry
TOE CAP	Steel, nickel free
MIDSOLE	Steel, nickel free
FOOTBED	Soft-tex
SOLE	BASE PU/PU
SIZE	36-47 S



HILDA S1P SRC

UPPER	Suede leather
LINING	bdry
TOE CAP	Steel, nickel free
MIDSOLE	Steel, nickel free
FOOTBED	Soft-tex
SOLE	BASES PU/PU
SIZE	36-47



YMIR S1P SRC

UPPER	Leather
LINING	bdry
TOE CAP	Steel, nickel free
MIDSOLE	Steel, nickel free
FOOTBED	Soft-tex
SOLE	BASES PU/PU
SIZE	36-47

DDR



DDR
collection

Ideal footwear for construction, foundries, steel mills and all those jobs that require contact with heat sources.

DDR (Double Density Rubber) technology offers greater durability on rough, hard and abrasive terrain, thanks to the high-density SOLE contact, while SOLE midsole in soft rubber provides major comfort and safety.

The SOLE is resistant up to 300 °C of heat for contact and has excellent slip results that guarantee greater safety in hostile work environments.

PB10

S3 HRO SRC



UPPER	Water repellent full grain leather
LINING	Tissue
TOE CAP	Stainless steel
MIDSOLE	Stainless steel
FOOTBED	PSD
SOLE	DDR, Double density rubber
SIZE	38-47

PB10C





PB15CZ



PB15C S3 HRO SRC

UPPER	Water repellent full grain leather.
LINING	Tissue
TOE CAP	Stainless steel
MIDSOLE	Stainless steel
FOOTBED	PSD
SOLE	DDR, Double density rubber
SIZE	38-47

PB16 S3 HRO SRC

UPPER	Water repellent full grain leather
LINING	Tissue
TOE CAP	Stainless steel
MIDSOLE	Stainless steel
FOOTBED	PSD
SOLE	DDR, Double density rubber
SIZE	38-47





ACCESSORIES



SYNERGY 3

Engineered to maximize cushioning effect and energy absorption, both in the ball and heel areas, thanks to the innovative combination of different PU densities. Optimal stability and support to the arch of the foot. Anti-static, breathable and lined with anti-abrasion fabric. Sizes: 38-47



MULTI POWER

Assures a cushioning effect on all the foot surface thanks to the multiple 3D-structure in soft PU. Anti-static, breathable, lined with anti-abrasion fabric. Sizes: 38-47



PSD

Made of PU 10 mm expanded, covered with antibacterial fabric. Perforated in the front part, anatomically shaped. Sizes: 38-47

MERCHANDISING



PERF T-SHIRT

Short sleeve crew neck t-shirt. 100% cotton. Color: white / blue. Size: S M L XL XXL

POLO PERF

100% cotton. Color: blue / gray. Available with the Italian or French flag on the right sleeve. Size: S M L XL XXL



CAP PERF HONDA MOTOGP

Cotton cap with perforated inserts for extra breathability. Colors: blue or red





PERF SWEATSHIRT
70% cotton, 30% polyester.
Colors: Blue.
Size: S M L XL XXL

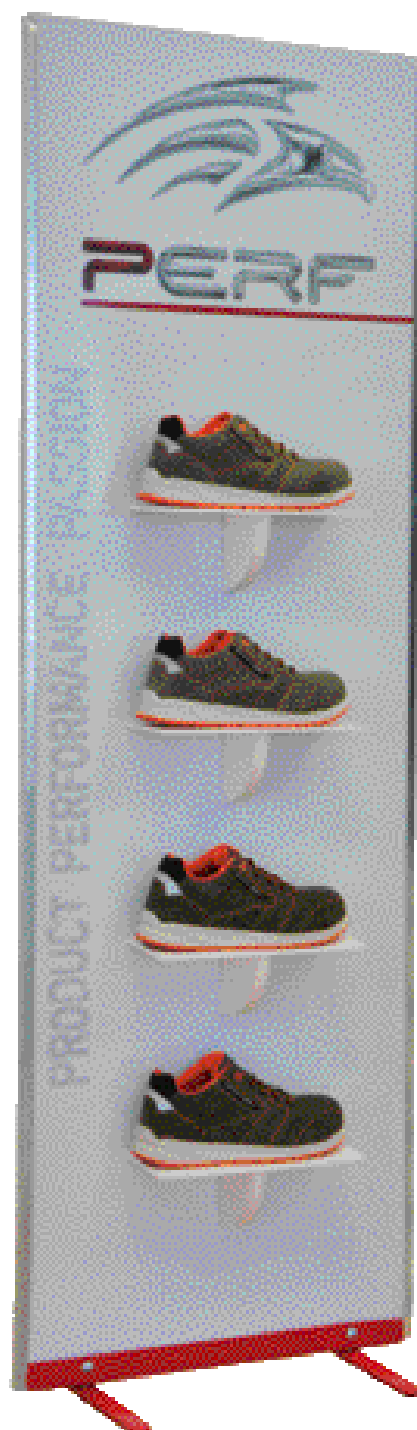


QUILTED GILET

100% Polyester
Size: S M L XL XXL

PERF DISPLAY

Display in hi-board 4 positions.
Practical and compact.
Measurements: H 182cm x W 82cm x
D 30cm





SUMMARY OF EUROPEAN LEGISLATION

The European legislation in force since 1993 distinguishes the types of footwear according to the level of risk, establishing the specific requirements for each category.

1. Safety footwear EN ISO 20345:2011

(from the English: SAFETY) These are provided with toe caps made to give protection against knocks up to an energy level of 200 joules and against the risk of crushing with a maximum load of 15.000 N.

2. Occupational footwear 20347:2012

(from the English: OCCUPATIONAL) They are not provided with protective toe caps

The puncture resistant sole guarantees resistance to perforations of up to a load of 1.100 N. The identification symbol is P.

The quick release device must be used in the event of a danger of the infiltration of incandescent parts and/or corrosive liquids.

The safety footwear is Category II – with EC Mark, in compliance with the European Directive EEC 89/686. We are therefore listing the markings which are used by law to allow identification of the specific requirements of the footwear, as well as the data regarding the manufacturer and the date of manufacture.

		EN ISO 20345:2011				EN ISO 20347:2012				Minimum required values
		SB	S1	S2	S3	OB	O1	O2	O3	EN ISO 20345:2011 EN ISO 20347:2012
A	Antistatic footwear	–	•	•	•	–	•	•	•	from 1x105 OHM bis 1x109 OHM
E	Heel energy absorption	–	•	•	•	–	•	•	•	≥ 20 Joules
WRU	Water Resistant Upper	–	–	•	•	–	–	•	•	> 60' – Absorption ≤ 30%
P	Puncture Resistant midsole	–	–	–	•	–	–	–	•	≥ 1100 N.
CI	Insulation from cold	–	–	–	–	–	–	–	–	Δ Tem. ≤ 10° C.
HI	Insulation from heat	–	–	–	–	–	–	–	–	Δ Tem. ≤ 22° C.
C	Conductive footwear	–	–	–	–	–	–	–	–	< 1x10 ⁵ OHM
HRO	Heat resistance on contact	–	–	–	–	–	–	–	–	at 300° C. for 60" – Does not melt.
AN	Ankle protection	–	–	–	–	–	–	–	–	Average value > 20 kN
IS	Electrical isolation (Dielectric)	–	–	–	–	–	–	–	–	class 00 ou Class 0
WR	Water resistance	–	–	–	–	–	–	–	–	No penetration for first 15' (minutes). After 100 lengths no more than 3 cm2 of water must enter [spot]
M	Metatarsal protection	–	–	–	–	–	–	–	–	Height after impact > 40 mm [size42]CR
CR	Cut resistance of Upper	–	–	–	–	–	–	–	–	Facteur I ≥ 2,5
FO	Resistance of to hydrocarbons	–	•	•	•	–	–	–	–	Requirement always present according to EN ISO 20345:2007 and EN ISO 20346:2007, but to specify with initials FO when included in EN ISO 20347:2012

ex OR0

-Requested requirements;---non compulsory requirements: check stamp on footwear

Slip resistance - Norm: EN ISO 2034X:2011 (where X= 5 o 7)

Symbol	Conditions requises prévues par la norme
SRA	≥ 0.32 flat footwear
Testing ground: ceramic Lubricant: cleanser	≥ 0.28 footwear with a 7° heel incline
SRB	≥ 0.18 flat footwear
Testing ground: steel Lubricant: glycerine	≥ 0.13 footwear with 7° heel incline
SRC	Both requirements stated above



WHEN TALENT MEETS UP WITH DESIGN AND TECHNOLOGY

AMAZING THINGS HAPPEN

PERF HONDA LCR OFFICIAL SPONSOR





PRODUCT PERFORMANCE PASSION



DESIGNED IN ITALY

PERF ITALIA Srl

Head Office:
Via Callano 161/163
76121 - Barletta (BT)
Italy

Registered Office:
Via del Commercio, 21
36071 - Arzignano (VI)
Italy

info@perf-safety.it
www.perf-safety.com
www.perf4u.com

follow us on

